

143 Angels, from the Realms of Glory

1 An - gels, from the realms of glo - ry, wing your flight o'er
 2 Shep - herds, in the fields a - bid - ing, watch - ing o'er your
 3 Sag - es, leave your con - tem - pla - tions; bright - er vi - sions
 4 All cre - a - tion, join in prais - ing God the Fa - ther,

all the earth; you, who sang cre - a - tion's sto - ry,
 flocks by night, God with us is now re - sid - ing;
 beam a - far; seek the great de - sire of na - tions;
 Spir - it, Son, ev - er - more your voic - es rais - ing

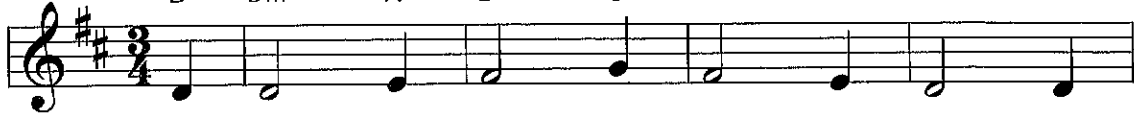
now pro - claim Mes - si - ah's birth:
 yon - der shines the in - fant light: come and wor - ship,
 you have seen his na - tal star:
 to the e - ter - nal Three in One:

come and wor - ship, wor - ship Christ, the new - born king!

This familiar carol was first published as a poem in the Christmas Eve 1816 issue of a newspaper the author edited in Sheffield, England. The tune name celebrates the location of a prominent Presbyterian Church in London, sometimes called the "Presbyterian cathedral."

What Star Is This, with Beams So Bright 152

Capo 2: (C) (Am) (G) (C) (F) (C) (G) (C) (F)
 D Bm A D G D A D G



1 What star is this, with beams so bright, more
 2 'Tis now full-filled what God de-creed, "From
 3 While out-ward signs the star dis-plays, an
 4 O Je-sus, while the star of grace im-

(C) (G) (C) (F) (C) (G)
 D A D G D A



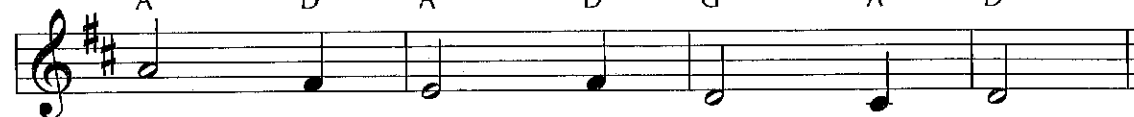
love-ly than the noon-day light? 'Tis
 Ja-cob shall a star pro-ceed"; and
 in-ward light the Lord con-veys and
 pels us on to seek your face, let

(Am) (D7) (G) (C) (F) (C) (Dm)
 Bm E7 A D G D Em



sent to an-nounce a new-born king, glad
 lo! the east-ern sa-ges stand to
 urg-es them, with ten-der might, to
 not our sloth-ful hearts re-fuse the

(G) (C) (G) (C) (F) (G) (C)
 A D A D G A D

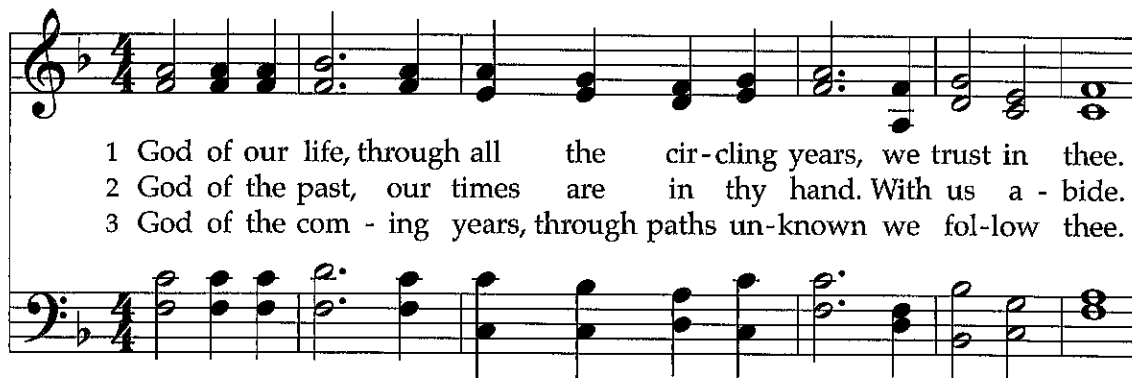


ti-dings of our God to bring.
 read in heaven the Lord's com-mand.
 seek the giv-er of the light.
 guid-ance of your light to use.

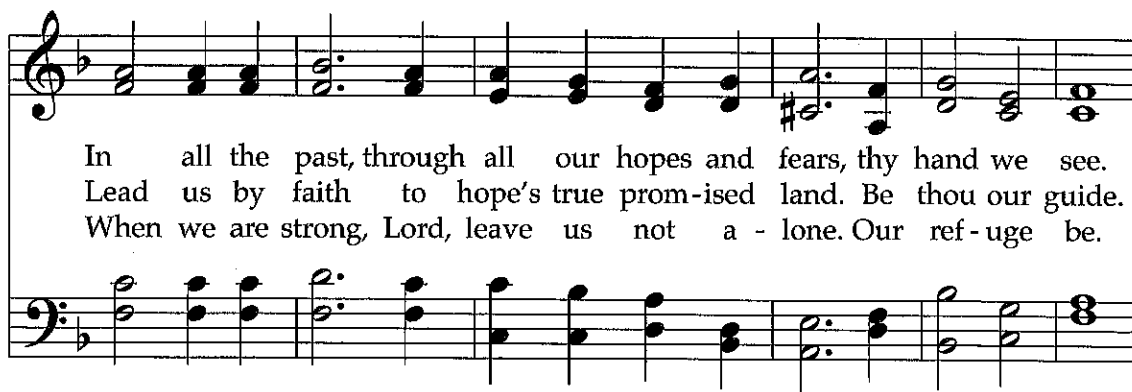
This 18th-century Latin text calls attention to three kinds of light: the light of the star leading the Magi to the Christ-child, the inward light inspiring their journey, and Christ who is the Light of the world. The simple unison melody unites everything in a gentle arc.

God of Our Life

686



1 God of our life, through all the cir-cling years, we trust in thee.
 2 God of the past, our times are in thy hand. With us a-bide.
 3 God of the com-ing years, through paths un-known we fol-low thee.



In all the past, through all our hopes and fears, thy hand we see.
 Lead us by faith to hope's true prom-ised land. Be thou our guide.
 When we are strong, Lord, leave us not a-lone. Our ref-uge be.



With each new day, when morn-ing lifts the veil,
 With thee to bless, the dark-ness shines as light,
 Be thou for us in life our dai-ly bread,



we own thy mer-cies, Lord, which nev-er fail.
 and faith's fair vi-sion chang-es in-to sight.
 our heart's true home when all our years have sped.

This text was created for the celebration of the fiftieth anniversary of the Shadyside Presbyterian Church in Pittsburgh, Pennsylvania, by its pastor. He wrote these words especially for this tune, originally composed for John Henry Newman's text "Lead, Kindly Light."

TEXT: Hugh Thomson Kerr, 1916, alt.

MUSIC: Charles Henry Purday, 1860; harm. John Weaver, 1986

Text © 1928 F. M. Braselman, ren. 1956 Presbyterian Board of Christian Education

(admin. Westminster John Knox Press)

Music Harm. © 1990 Hope Publishing Company

SANDON

10.4.10.4.10.10

827 O Morning Star, How Fair and Bright

1 O Morn - ing Star, how fair and bright! You shine with
 2 Lord, when you look on us in love, at once there
 3 What joy to know, when life is past, the Lord we

God's own truth and light, a - glow with grace and mer - cy!
 falls from God a - bove a ray of pur - est plea - sure.
 love is first and last, the end and the be - gin - ning!

Of Ja - cob's line, King Da - vid's son, our Lord and Sav - ior,
 Your word and Spir - it, flesh and blood re - fresh our souls with
 He will one day, O glo - rious grace, trans - port us to that

This "Queen of Chorales" (see no. 349 for the "King") is often associated with Epiphany because of the star imagery, but the text is really addressed to Christ as the Morning Star (Revelation 22:16), who guides and sustains us in this life and is our hope for the life to come.

LIVING AND DYING IN CHRIST

you have won our hearts to serve you on - ly! Low - ly,
 heaven-ly food. You are our dear - est trea - sure! Let your
 hap - py place be - yond all tears and sin - ning! A - men!

ho - ly! Great and glo - rious, all vic - to - rious, rich in
 mer - cy warm and cheer us! O draw near us! For you
 A - men! Come, Lord Je - sus! Crown of glad - ness! We are

bles - sing! Rule and might o'er all pos - sess - ing!
 teach us God's own love through you has reached us.
 yearn - ing for the day of your re - turn - ing.